



STATE OF NORTH CAROLINA  
DEPARTMENT OF TRANSPORTATION

ROY COOPER  
GOVERNOR

J.R. "JOEY" HOPKINS  
SECRETARY

June 5, 2024

**Addendum No. 1**

RE: Contract # C204501

WBS # 42370.3.3

FEDERAL-AID NO. STBGDA-1001(093)

**Mecklenburg County (U-5108)**

SR-2316 (NORTHCROSS DR) FROM NORTH OF NC-73 (SAM FURR RD) TO  
SR-2147 (WESTMORELAND RD)

**June 18, 2024 Letting**

To Whom It May Concern:

Reference is made to the plans furnished to you on this project.


The following revision has been made to the Roadway plans.

Sheet Nos.	Revision
11	Segmental Block Retaining Wall callout removed

Please void the above listed Sheet in your plans and staple the revised Sheet thereto.

The contract will be prepared accordingly.

Sincerely,

DocuSigned by:  
  
 52C46046381F443...

Ronald E. Davenport, Jr., PE  
State Contract Officer

RED/jjr  
Attachments

cc: Mr. Wiley W. Jones III, PE  
Mr. Brett D. Canipe, PE  
Mr. Ken Kennedy, PE  
Mr. Malcolm Bell

Mr. Forrest Dungan, PE  
Ms. Jaci Kincaid  
Mr. Jon Weathersbee, PE  
Project File (2)



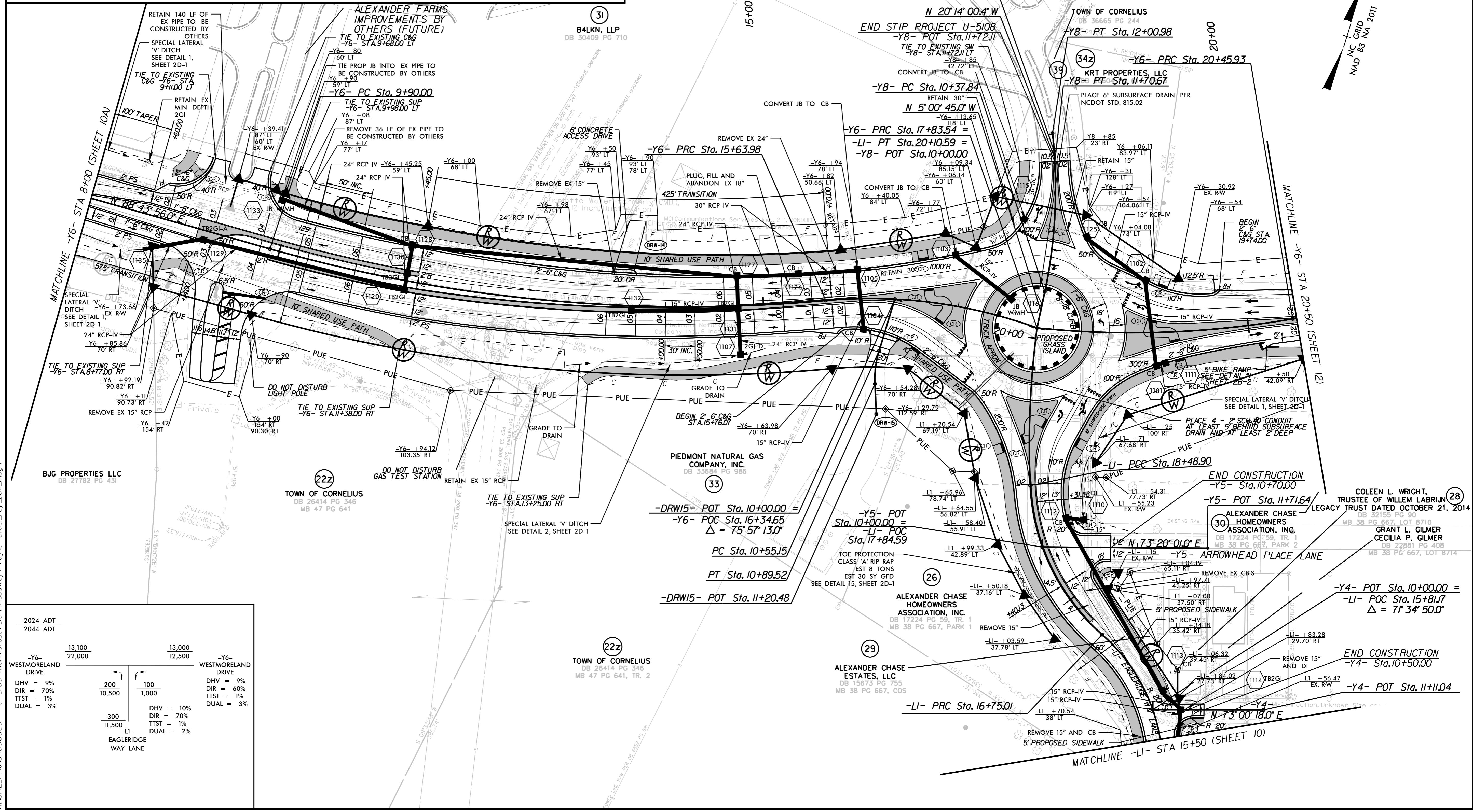
-LI-			-Y8-		
PI Sta 15+81.77 Δ = 69' 12" 48.7" (LT) D = 31' 49" 51.6" L = 217.44' T = 124.21' R = 180.00' SE = NC RO = NONE DS = 20 MPH	PI Sta 17+67.02 Δ = 46' 20" 24.1" (RT) D = 26' 38" 57.1" L = 173.89' T = 92.02' R = 215.00' SE = NC RO = NONE DS = 20 MPH	PI Sta 19+29.95 Δ = 10' 04" 12.5" (RT) D = 6' 13" 40.1" L = 161.70' T = 81.06' R = 920.00' SE = NC RO = NONE DS = 20 MPH	PI Sta 11+04.65 Δ = 15' 13" 15.4" (LT) D = 11' 27" 33.0" L = 132.83' T = 66.81' R = 500.00' SE = NC RO = NONE DS = 20 MPH	PI Sta 11+91.84 Δ = 4' 11" 37.2" (LT) D = 22' 55" 05.9" L = 18.30' T = 9.15' R = 250.00' SE = MATCH EXIST. RO = MATCH EXIST.	

-Y6-				
PI Sta 12+80.24 Δ = 20' 58" 15.1" (LT) D = 3' 39" 12.9" L = 573.98' T = 290.24' R = 1568.21' SE = 6% RO = 180° DS = 50 MPH	PI Sta 16+75.56 Δ = 25' 09" 33.4" (RT) D = 11' 27" 33.0" L = 219.56' T = 111.58' R = 560.00' SE = NC RO = NONE DS = 20 MPH	PI Sta 19+15.56 Δ = 15' 39" 38.4" (LT) D = 5' 58" 05.9" L = 262.40' T = 132.02' R = 960.00' SE = NC RO = NONE DS = 20 MPH	PI Sta 20+90.33 Δ = 9' 13" 51.5" (RT) D = 10' 25" 02.7" L = 88.61' T = 44.40' R = 550.00' SE = NC RO = NONE DS = 20 MPH	PI Sta 22+56.01 Δ = 1' 35" 37.7" (RT) D = 1' 38" 13.3" L = 97.36' T = 48.68' R = 3500.00' SE = MATCH EXIST. RO = MATCH EXIST.

FOR -Y4- PROFILE, SEE SHEET 20	ROUNDBOUT DETAIL, SEE SHEET 2B-1
FOR -Y5- PROFILE, SEE SHEET 20	FOR DRW-15 PROFILE, SEE SHEET 21
FOR -Y6- PROFILE, SEE SHEET 17	
FOR -Y8- PROFILE, SEE SHEET 21	

**Kimley Horn**  
 NC LICENSE #F-0102  
 200 SOUTH TRYON, SUITE 200  
 CHARLOTTE, N.C. 28202  
 RIGHT-OF-WAY REV.  
 CONST. REV.

PROJECT REFERENCE NO. U-5108	SHEET NO. 11
ROADWAY DESIGN ENGINEER	HYDRAULICS ENGINEER
6/4/2024	6/4/2024
<b>DOCUMENT NOT CONSIDERED FINAL UNLESS ALL SIGNATURES COMPLETED</b>	



2024 ADT 2044 ADT	13,100 22,000	13,000 12,500	-Y6- WESTMORELAND DRIVE
DHV = 9%	200	100	DHV = 9%
DIR = 70%	10,500	1,000	DIR = 60%
TTST = 1%			TTST = 1%
DUAL = 3%			DUAL = 3%
	300		DHV = 10%
	11,500		DIR = 70%
			TTST = 1%
			DUAL = 2%

LI- EAGLERIDGE WAY LANE

6/4/2024 K:\CHL\_PRA\101036359 - U-5108 (Northcross) DSN\Roadway\Proj\U-5108\_rdy\_psh.llgdn